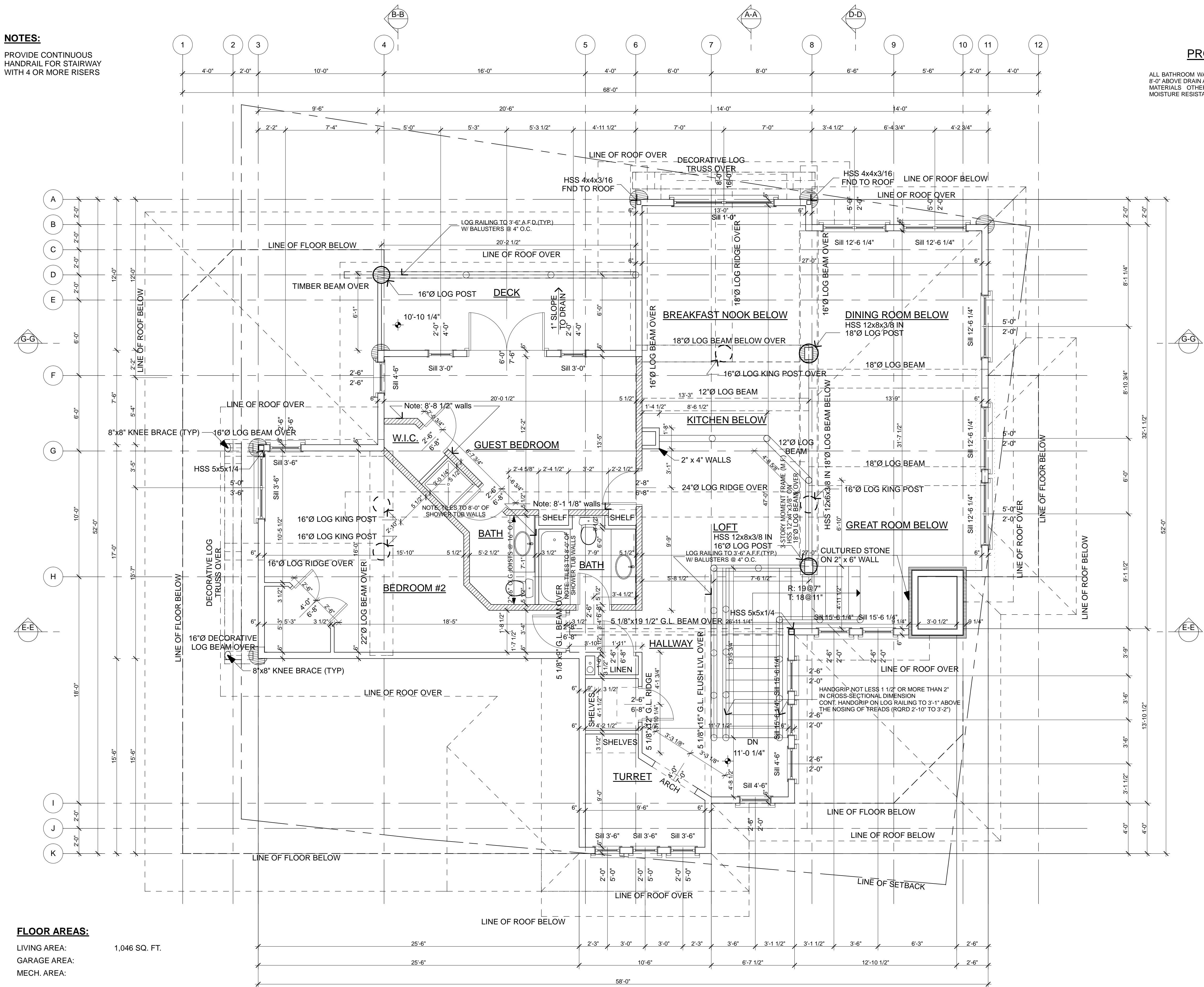


NOTES:

PROVIDE CONTINUOUS
HANDRAIL FOR STAIRWAY
WITH 4 OR MORE RISERS

PROJECT NOTE:

ALL BATHROOM WALL COVERING SHALL BE CERAMIC TILES TO
8'-0" ABOVE DRAIN AT SHOWERS OR TUB WITH SHOWERS. U.N.O.
MATERIALS OTHER THAN STRUCTURAL ELEMENTS TO BE
MOISTURE RESISTANT.

**FLOOR AREAS:**

LIVING AREA: 1,046 SQ. FT.
GARAGE AREA:
MECH. AREA:

LEGEND

STAGGERED STUD WALL

1 Upper Floor Plan
A4 1/4" = 1'-0"

APR. 1, 2005 - FOR ESTIMATE

JUN. 3, 2005 - FOR ENGINEERINGS

JUN. 16, 2005 - FOR REVIEW

JUL. 21, 2005 - FOR PERMIT

AUG. 03, 2005 - FOR PERMIT

AUG. 15, 2005 - FOR CROOKED
PINES REVIEW

AUG. 22, 2005 - FOR GRADING
AUTHORIZATION APPLICATION

AUG. 24, 2005 - FOR PLAN
CORRECTIONS

AUG. 26, 2005 - FOR CLIENT
REVIEW

AUG. 30, 2005 - FOR CROOKED
PINES REVIEW

SEP. 08, 2005 - FOR PLAN CHECK
RESPONSE

GENERAL NOTES

1. DRAWINGS ARE THE PROPERTY OF HEARTWOOD LOG & TIMBER DESIGN INC. AND THE ORIGINAL LINCOLN LOG HOMES LTD. ANY UNAUTHORIZED USE IS STRICTLY PROHIBITED.
2. CONTRACTORS ARE RESPONSIBLE FOR CHECKING AND VERIFYING ALL DIMENSIONS. REPORT ALL INCONSISTENCIES TO HEARTWOOD LOG & TIMBER DESIGN INC. AND THE ORIGINAL LINCOLN LOG HOMES LTD. DO NOT SCALE FROM DRAWINGS.
3. CONFIRM ALL DETAILS NOT SHOWN WITH HEARTWOOD LOG & TIMBER DESIGN INC. AND THE ORIGINAL LINCOLN LOG HOMES LTD. NON-APPROVED DETAILS MAY BE REQUIRED TO BE CHANGED.
4. ANY SUBSTITUTION OF MATERIALS MUST BE APPROVED BY HEARTWOOD LOG & TIMBER DESIGN INC. AND THE ORIGINAL LINCOLN LOG HOMES LTD.

DRAWN BY: MB

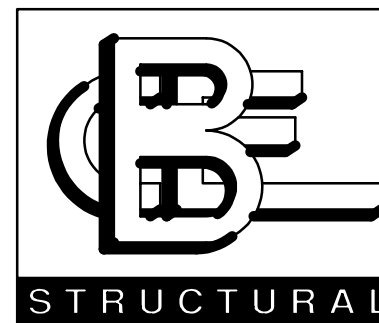
APPROVED: MTA

DATE: JUL. 21, 2005

PLOT SIZE: D

SCALE: AS SHOWN

HEARTWOOD LOG & TIMBER DESIGN INC.
199 WOOLWICH STREET
GUELPH, ONTARIO, CANADA N1H 3V4
TEL: 519-829-1758
FAX: 519-829-3672
EMAIL: MAIL@DESIGNMA.COM



BEAUDETTE CONSULTING
ENGINEERS, INC.
131 WEST MAIN
MISSOULA, MT. 59802
TEL: (406) 721-7315
FAX: (406) 542-8955
www.bcweb.com

PROJECT:

CLEVELAND RESIDENCE
MAMMOTH LAKES, CA

FLOOR PLAN

A4